

POS Printer

## RP-E10 Series



- RP-E10 : Receipt top-exit / RP-E11 : Receipt front-exit
- Compact cube : 129mm x 129mm x 129mm
- Max printing speed : 350mm/sec
- High Reliability : 150km, 2 million cuts
- Various drivers and wide variety utility software
- Large LED indicator (Multi-color)



RP-E11

Model	RP-E10 (Receipt top-exit)	RP-E11 (Receipt front-exit)
Method	Thermal line dot printing	
Number of dots/line	576	
Resolution (dpi)	203 (8dots/mm)	
Paper width (mm)	58 <sup>+0</sup> / <sub>-1</sub> / 80 <sup>+0</sup> / <sub>-1</sub>	
Printing width (mm)	54/72	
Speed (mm/sec)max	350	
Outside diameter of paper roll (mm)max	φ83	
Inside diameter of paper roll (mm)	φ12	
Character matrix (H x W dots)	24 x 12, 24 x 24, 16 x 8, 16 x 16	
Character size (H x W mm)	3.0 x 1.5, 3.0 x 3.0, 2.0 x 1.0, 2.0 x 2.0	
Type of paper	Roll paper, Timing mark roll paper (Timing mark sensor supported by standard)	
Character type	Code page: 14pages, Optional font, Downloaded character, User-defined character, JIS 1&2 level kanji, Special character	
Bar code	UPC-A/E, JAN(EAN)8/13, ITF, CODE39, CODABAR, Code93, CODE128, PDF417, QR Code	
Power supply (V)	Specified AC adapter, External power (DC24V±5%)	
Communication interface	Serial (RS-232C), USB, Powered USB, Ethernet	
Input buffer	16k bytes	
Command	ESC/POS™ conformity, Markup Language	
Cutting	Methods	Slide type
	Cutting type	Full cut, Partial cut (Leave center point)
Operating Temperature (°C)	5 to 45	
Service life	Abrasion resistance (km)	150*1
	Life (cut)	2,000,000
Dimensions (W x D x H mm)	129.0x129.0x129.0*2	
Mass (g)	Approx. 1300	
Standard	FCC, CE, VCCI, RCM	
Option	Wall mounting kit	
Cash drawer	2 drivers (24V / 1A)	
Body color	2 models: White / Black	
Driver	Windows® XP/Vista/7(32bit/64bit), OPOS(XP/Vista/7/POSReady2009/POSReady7) POS for .Net (XP/Vista/7/POSReady2009/POSReady7), Linux(CUPS/SDK), Android™(SDK)	

ESC/POS™ : Registered trademark of SEIKO EPSON CORP. Windows® is the registered trademark of Microsoft Corporation (USA). Android™ is a trademark of Google Inc. \*1 Use recommended thermal papers. \*2 Excluding protrusion

**Software tools** Convenient software tools available for assisting application development.

### Driver and utility software

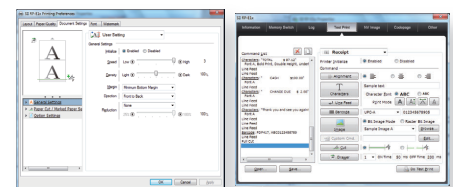
SDK: Status API, Devmode API (For Win32 API\*3 / .net API\*4)

\*3 \*4 The Windows® API, informally WinAPI, is Microsoft's core set of application programming interfaces (APIs) available in the Microsoft Windows® operating systems. The Win32 API is for Windows® operating system.

### Utility soft

(Build on the Windows® driver)

- Memory SW setting,
- LOG management,
- USB serial ID setting,
- NV image registration,
- Code page registration



Specifications are subject to change without notice.